

Chandler Girls Softball  
Spring 2025 Coaches Meeting

*Welcome!*

- THANK YOU FOR GIVING YOUR TIME, PROVIDING LEADERSHIP & CONTRIBUTING TO THE YOUTH OF OUR COMMUNITY.

# CGSL Mission Statement

- **Mission Statement.** Chandler Girls' mission statement is to provide Chandler and its neighboring communities a positive and safe environment for girls ages 4-18 years of age an equal opportunity to play softball; to honor the game by encouraging good sportsmanship, teamwork, and physical wellbeing, while developing the fundamental skills of softball; and, to ensure that all players are treated as valued team members while building lasting relationships and having fun!

*“The outcome of the child is more important than the outcome of the game...”*

---

Our league is run strictly on volunteers.

We are in need of Volunteers and Board members  
if you would like to help us keep our league going  
please ask how you can help today!!

---

We emphasize skill development, fun, family, friendship  
& fitness.

---

We create a positive and encouraging environment.



# Social Media

Please like & follow us on Facebook  
and Instagram

to stay up to date on all the current  
CGSL softball action.

- Facebook: **Chandler Girls' Softball**
- Instagram: **chandlergirlssoftball**

# Board Members

## League President

Bill Dean

- Website
- Team Snap
- 10U Chair
- Pitcher/Catcher Evals & Draft
- Season Schedules
- Player & Coach Registration

## Vice President

Alan Lee

- CYSA Liason
- Uppers Chair

## League Treasurer

Diana Colona

- Finances
- Registration
- Teams & Rosters
- Jerseys
- Vendors

## League Secretary

Erin Johnson

- Head Communications
- 12U Chair

## Board Member

Brian Brewer-Twito

- 10U Chair
- Field Duty Schedules
- Practice Field Schedules
- Social Media

## Board Member

Eddie Geren

- Insurance
- Equipment
- 8U Chair

## Board Member

Laurel Collins

- 10U Chair
- Merch
- Rosters

## Board Member

Allison Rasmussen

- Picture Day
- Field Duty

## Board Member

Stephen Joy

- Umpires
- Uppers Chair

## Board Member

Don McChesney

- Coaches & Sponsors

## Board Member

Chris Johnson

- 12U Chair

## Board Member

Launa Geren

- 8U Chair

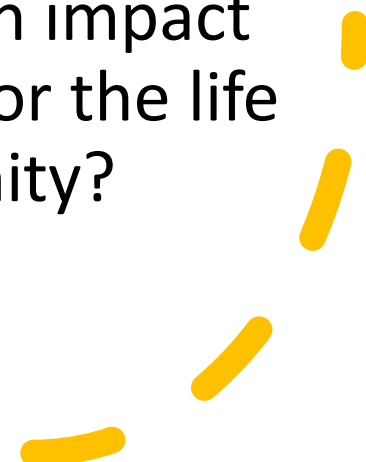
## Provisional Member

Katie Hidalgo

- Jerseys



Board  
Members /  
Volunteers

- Do you have questions about rules?
  - Do you think a rule needs to be changed?
  - Do you not like a way that CGSL does something?
  - Do you like the way CGSL does things and want to make it better?
  - Do you want to make an impact on your daughter's life or the life of girls in your community?
- 

# Please consider joining the board



The Chandler Girls Softball League (CGSL) has been a cherished community institution since 1977.



We've been on the lookout for volunteers to help with our projects. We just brought on seven new members, but with some retirements coming up, there will be more chances for new folks to jump in. Right now, our team is in good shape, but we're getting ready for what's ahead.



We'd love for you to join us at our next board meeting on March 10th at Tumbleweed Recreation Center to find out how you can get involved and make a difference.



# Board Members / Volunteers

## **PERKS OF BECOMING A BOARD MEMBER**

1. Pride in knowing you get to help your family & community.
2. Pride in volunteering and helping others.
3. Free registration for your daughter.
4. Placement of your daughter on any team (with exceptions).

# Season Info

# Game Schedule

Published on TeamSnap

Check frequently for changes.

During regular season play, rained-out games or any games canceled due to reasons beyond the control of CGS, may not be re-scheduled.

# Splitting Games Between Tumbleweed & Folley

- Opening Day, Saturday 3/22 will be at Folley
- All remaining Saturdays will be at Tumbleweed
- All weeknight games will be at Folley

## Weeknights at Folley

MONDAY	TBall	East	North	South
5:30 PM	Practice	8U G1	10U G1	10U G2
7:00 PM	NO LIGHTS	8U G2	10U G3	10U G4
TUESDAY	TBall	East	North	South
5:30 PM	Practice	8U G3	12U G1	12U G2
7:00 PM	NO LIGHTS	8U G4	12U G3	12U G4
WEDNESDAY	TBall	East	North	South
5:30 PM	Practice	Practice	Uppers G1	8U G5
7:00 PM	NO LIGHTS	Practice	Uppers G2	Uppers G3

## Irrigation Week at Folley

MONDAY	North	South
5:00 PM	10U G1	10U G2
6:30 PM	10U G3	10U G4
TUESDAY	North	South
5:00 PM	12U G1	12U G2
6:30 PM	12U G3	12U G4
WEDNESDAY	North	South
5:00 PM	8U G1	UPPERS G1
6:30 PM	UPPERS G2	UPPERS G3
THURSDAY	North	South
5:00 PM	8U G2	8U G3
6:30 PM	8U G4	8U G5

## Saturdays at Tumbleweed

SATUDAYS	Field 1	Field 2	Field 3	Field 4
Game 1	8U G1	10U G1	TBall G1	TBall G2
Game 2	8U G2	10U G2	12U G1	Uppers G1
Game 3	8U G3	10U G3	12U G2	Uppers G2
Game 4	8U G4	10U G4	12U G3	Uppers G3
Game 5	8U G5		12U G4	
Game 6				

# Games, Pool Play & Tournament

## **Regular season: 8 Games**

- Games will state in team snap what team is home team and what team is the visiting team.

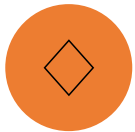
## **Pool Play: 3 games**

- Will be a coin toss to determine home or visiting team.

## **Tournament Play: Single Elimination**

- Will be the higher seed from Pool Play.

# Pitching/Catching Clinics



Folley East Beginning  
March 6<sup>th</sup>



Inexperienced Pitcher  
& Catcher clinics will  
be from 7:00 - 7:35pm



Experienced Pitcher &  
Catcher clinics will be  
from 7:45 - 8:30pm

# Park Info



# Folley & Tumbleweed Park Rules

There is no smoking or drinking allowed at the park during  
practice or a game!

# Folley Park Light Codes



## To turn them on:

Folley North: 510001#

Folley South: 510002#

Folley East: 510003#



## To turn them off:

Folley North: 510001\*

Folley South: 510002\*

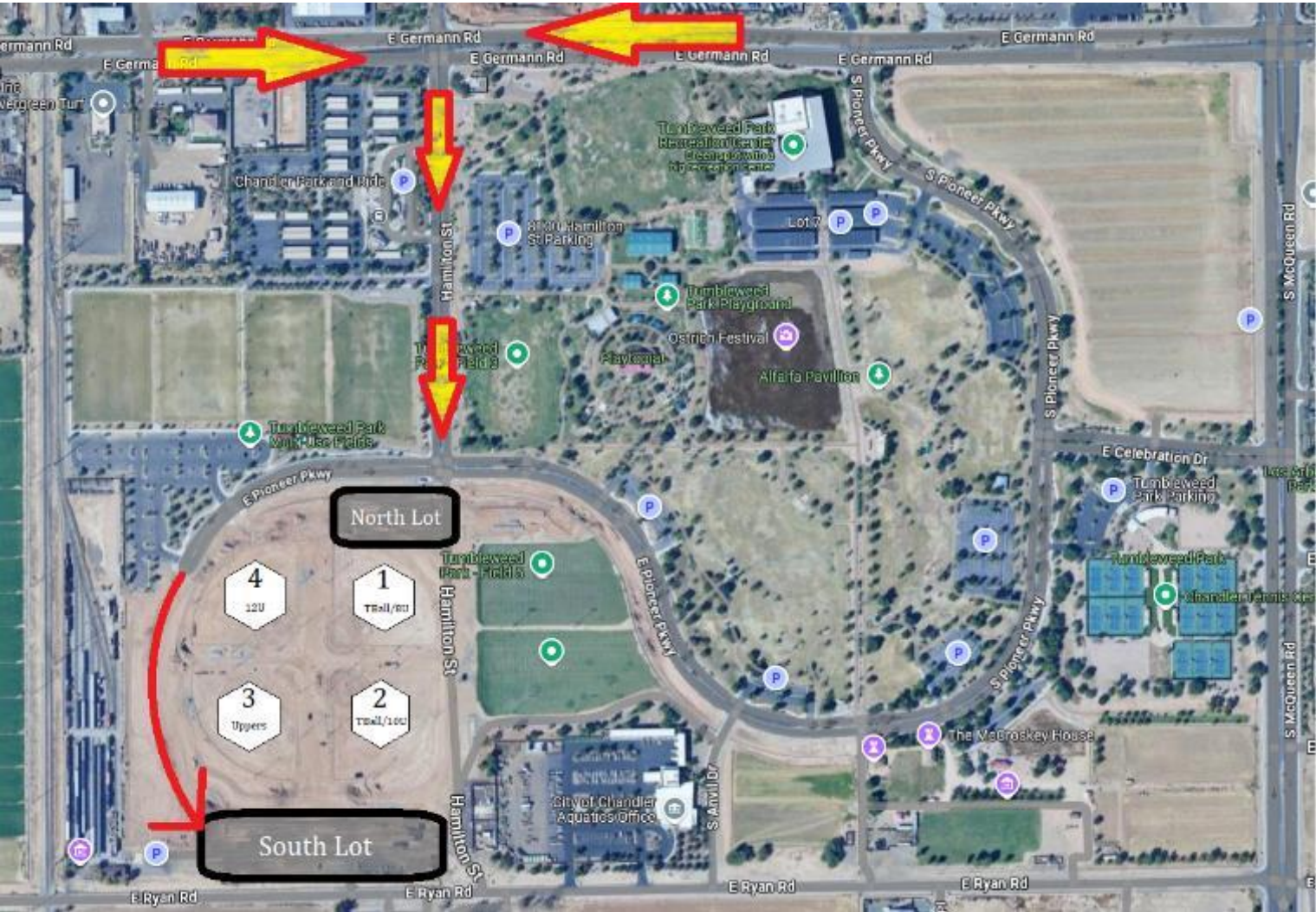
Folley East: 510003\*



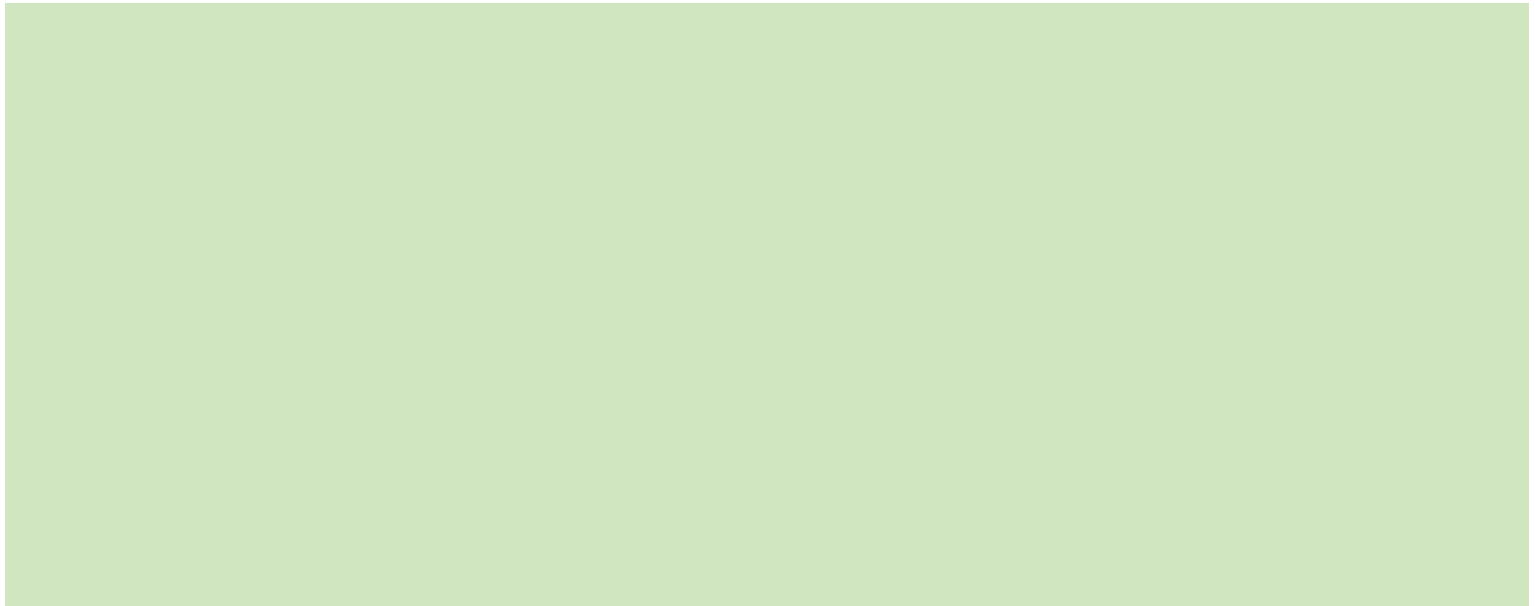
# Folley Memorial Park

- Located at:
- 601 E Frye Rd, Chandler, AZ 85225

# Tumbleweed



# Coach Field Duty



# Coach field Duty

- Email [BoardDuty@chandlergirlssoftball.org](mailto:BoardDuty@chandlergirlssoftball.org) to sign up
- First come, first served
- **Email needs to have division and team number**
- Only one is required, but we have enough slots for people to sign up for more which gets you preferential treatment for getting practice fields the following week.

# Coaches Responsibilities

- Coaches are responsible for their players and parents.
- **3.12 Player or Coach Ejections.** If a player, coach, or spectator is ejected, the player, coach, or spectator is suspended from the next scheduled game. If any additional ejections occur, the player, coach, or spectator is suspended indefinitely and asked to appear before the Board for disciplinary action. The ejection of a player will not cause the team to begin its at bat with an out nor will an out be posted each time the player is scheduled to bat.

# Discrimination & Harassment

- **USING TECHNOLOGY** such as Facebook, Twitter, texting, email, and voicemail to generate, send or display material that is considered obscene, profane, intimidating, threatening, defamatory or which identifies or refers to a Protected Characteristic in derogatory or stereotypical terms. This includes material that is intended only as a joke or for amusement purposes.



# Coaches Responsibilities

It is the home team's responsibility to keep score and to keep the scorebook updated!!

We will give each coach one reminder. After that if you fail to keep score you will lose home team advantage in that game.

# Coaches Responsibilities

- Coaches are not allowed to cancel or forfeit games on their own.
  - If you are unable to attend your game, contact an assistant, parent or a board member to step in for that game.
  - If you need more players, please ask you division chair or a board member at the field.
  - If you have a disagreement with a board decision on games, please proceed with the game and bring your concerns to the next board meeting.

## Division Chairs

Your Division Chair is your first line of contact. Reach out with any questions, comments, concerns...

### 8U Chairs

Eddie Geren & Lauana Geren

### 10U Chairs

Bill Dean, Laurel Collins & Brian  
Twito

### 12U Chairs

Chris Johnson & Erin Johnson

### Uppers Chairs

Alan Lee & Stephen Joy

# Division Chairs

# League Rules (All Divisions)

# Cost

- Parents/players can not be required to pay for anything beyond:
  - the registration fee
  - basic equipment for their player
    - (glove, athletic shoes, helmet)

# Official Line-Up

- **Legal Line-Up.** A minimum legal line-up is eight (8) players for every division, except for 8u Coach Pitch. The 8u Coach Pitch minimum legal line-up is seven (7) players. All divisions can borrow to get up to (9) players.
  - Borrowing a pitcher or catcher: If you borrow a pitcher or catcher, they can only pitch or catch if you do not have your own pitcher or catcher.
- If you need help getting to a legal line-up, please contact your division chair or a board member at the field we will help find you players.
- Players can play up a division but may not go down a division.

# PLAYING RULES

- Chin-straps and face-guards on batting helmets are required at all times when batting.
- Rubber cleats / shoes only. No metal cleats.
- 8U, 10U, 12U Fielding masks are required to be worn at the pitcher position.
- T-Ball Fielding masks or helmets are required to be worn at the catcher position.
- Avoiding Collisions. It is the runner's responsibility to avoid a collision with a defender when there is a close play at a base. To avoid a collision, the runner may choose to either slide, choose an alternate route to the base, surrender, or retreat to the previous base.
- 3-Run Ahead Rule is effect for all divisions in a game when the current temperature meets or exceeds 100° F at game time.

# Batting Line-Up

- **Batting Line-Up.** ALL PLAYERS listed on the team roster must bat, unless being held out for disciplinary or other reasons. Coaches must indicate on the official CGS Line-Up Form if a player is being held out of a game along with a reason why. After play has begun, players arriving late must be reported to the umpire and are added to the bottom of the batting line-up. If a player is unable to bat when it is her turn to bat, the player must be removed from participating in the remainder of the game and the umpire must be notified. If the umpire is notified before the next batter steps into the batter's box, an out IS NOT called for the team, and the removed player is skipped over in the batting order. Players playing on a team and not registered or on the official team roster will cause the team to forfeit all games in which the non-registered or non-official player participated. USA Rules apply if batting out of order is discovered. See USA Rule 7, Section 2(D).




# Defensive Substitutions


- **Defensive Substitutions.** All players must play defensively in every game unless a player or parent requests to sit additional innings (due to illness or other reasons). Players may sub a maximum of two innings per game and no player may sub more than one inning in a game until all eligible players have been subbed one inning. **Exception:** In 12U and Uppers, Pitcher or catcher, once relieved, must sit out for an entire (three out) inning unless they are placed back into the pitcher or catcher position. If subbed out mid inning, the pitcher or catcher may be moved to a fielding position for the remainder of the inning.
- **Consequences:**
- First deviation will result in an ejection from the current game and a one-game suspension for the following game for the acting head coach. See Rule 5.2
- Second deviation during the same season will result in a forfeit of the game and a one-game suspension.

# Courtesy Runners Walks/Protests

**Courtesy Runners.** One courtesy runner is allowed per inning, unless a serious injury occurs after the utilization of the one courtesy runner. The courtesy runner must be the last out of the current or previous inning. Fast Pitch Only — an additional courtesy runner is optional for catchers when there are two outs to allow the catcher to put her gear on



**Intentional Walks.** Intentional walks are not allowed. In the event of an “intentional walk,” the pitcher will be removed from the pitching position for the remainder of the game. Umpire judgment controls.



**Protests.** The game clock is stopped, and all play ceases until a ruling has been made by the CGS field supervisor. See also USA Rule 9. A team may play a game under protest if they disagree with the ruling of the CGS field supervisor. The coach must inform the umpire and opposing coach prior to the next pitch that the game is being played under protest.

# Tied Games & Time Limits

- **Tied Games.** Tied games remain tied during regular season and pool play. See USA Tiebreaker Rule, Point of Emphasis 54 for tournament play. CGS Rule 3.16 (5-Run Ahead Scoring) will apply during a tournament tiebreaker inning.
- **Time Limits.** T-Ball games are 55 minutes. 8u and Slow Pitch games are 65 minutes. All remaining age groups are 75 minutes or seven innings whichever occurs first (except for tied games during tournament play). The inning in progress when time expires will be completed with the exception of 10U which will have a 90 minute drop dead time at which time, the score will revert back to the last completed inning. **During Regular Season Only.**
- If a game is called for weather or circumstances beyond the control of the Board, a legal game shall be Half of the time of game. Games that are stopped that are not yet a legal game are rescheduled and will be resumed at the exact point where the game was stopped. Players unavailable are skipped over in the batting order and can be replaced defensively. Batting line-up and substitution rules still apply. In the event of inclement weather or the unavailability of fields resulting in the inability to reschedule the game, the winner of the game will be determined by reverting back to the last completed inning.

# Official Line Up Cards

- Coaches must complete an Official CGS Line-Up Form to be presented to the umpire at the start of the game.
- The line-up cards shall include players' names and shirt numbers, starting positions and substitutions.
- 10U, 12U, Uppers: Pitcher/Catcher forms must be used to document all pitchers and catchers used in the game and must be submitted to the umpire at the beginning of the game or at the time a substitution is made. Use team # and full player name.
- If a player arrives after the start of the game, the coach must report the player to the umpire and the umpire will add the player(s) to the end of the batting line-up.

# Division Specific Info

# TBall

Games are 55 minutes long

Bases are set to 50 feet

11" Soft Compression  
softballs

Will be umpired by Uppers  
players 16 and older

Batted balls must advance  
beyond the 10-foot mark to  
be legal

No scores kept

Outs are called and bases  
are cleared; however,  
teams will continue to bat  
until all players on the team  
have had an opportunity to  
bat

Everybody bats

Everybody fields

Face mask needs to be  
worn by catcher while on  
the field

# 8U (Coach Pitch)

Games are 65 minutes long

Bases are set to 50 feet

Pitching distance is 25 feet

11" RIF 1 Sof-Dot softballs

Maximum of 5 pitches per batter

No stealing

Clear distinction between infielders & outfielders (No "7 Infielders")

Only one additional base at a time

---

Games are 75 minutes long

---

Bases are set to 50 feet

---

Pitching distance is 35 feet

---

11" regulation softballs

---

No Walks. On ball 4, coach will come in for an additional \*2\* pitches. If the batter does not put the ball in play within those two pitches, the batter is out.

---

Runner on 3rd may not steal home at any time

---

Only one additional base at a time

---

90-minute drop dead time at which time the score will revert to the last completed inning (During Regular Season Only)

---

Any player that expresses interest must be given the opportunity to pitch and catch in regular season games.

10U (Fast  
Pitch)



# 12U & Uppers (Fast Pitch)

Games are 75 minutes long

Bases are set to 60 feet

Pitching distance is 43 feet\*

12" regulation softballs

Pitcher or catcher, once relieved, must sit out for an entire (three out) inning unless there are placed back into the pitcher or catcher position. If subbed out mid inning, the pitcher or catcher may be moved to a fielding position for the remainder of the inning.

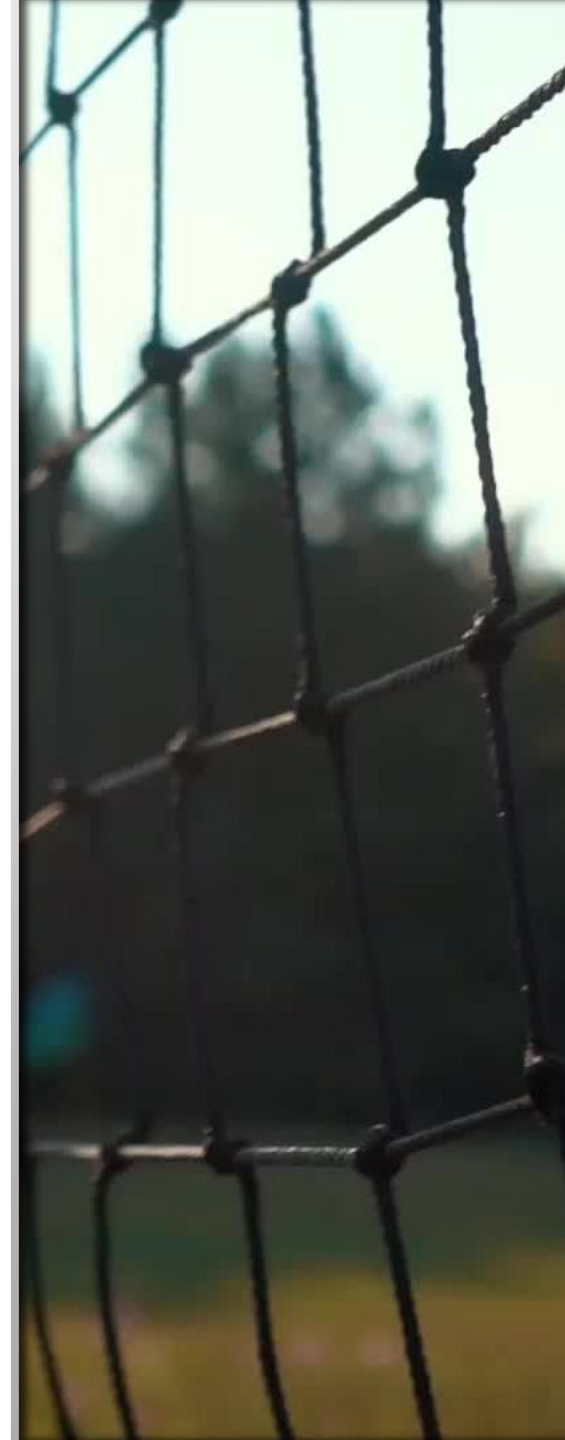
CGSL  
WEBSITE

# City of Chandler Field Rentals

- Coaches need to have a Chandler address to be able to request fields. If you do not have a Chandler address you can use an assistant coach's address, just let us know.
- Online reservations can be seven days in advance with reservations for the seventh day starting at 8 a.m.
- [https://apm.activecommunities.com/chandleraz/Reserve Options](https://apm.activecommunities.com/chandleraz/Reserve_Options)

# City of Chandler Field Rentals

- **Reservations:**
- **Field Fees:** Waived for CGSL coaches with a Chandler address
- **Light Fees:** \$15.00 per hour
- **Reservations:** 7 days in advance only. First come-first served.
- **Fields:** Any City of Chandler softball field (not school fields)
- **Contact:** 480 782-2727 or 782-2640 Starting at 8AM Call early!
- **Permit:** Issued by the city. Check it! No permit, no field!
- **Who:** Field must be reserved in name of head coach to waive field fees.
- **T-Ball Fields:** Folley T-ball field can not be reserved.



# CGSL Field Rentals

If you get fields through CGSL there are no fee's!!

Head coaches can get fields through CGSL via Google calendar. To request CGSL preseason fields please email [fields@chandlergirlssoftball.org](mailto:fields@chandlergirlssoftball.org).

We will be doing first come first serve every Monday starting at 8:00am. You can request two fields ever Monday. You need to include division # & team #.

Link to CGSL calendar to schedule practice fields:

<https://calendar.google.com/calendar/embed?src=bryan%40cgsb.ngo&ctz=America%2FPhoenix>

# The Umpires

- Role in the game:
  - *“Impartial observer in a conflict between opposing forces”*
- Training
  - All umpires have been through proper training. Most have been through USA Softball umpire training, and have worked leagues, as well as USA Softball Local and National Level tournaments.
  - Some have additional training for other levels where rules or mechanics may differ from USA Softball.
  - CGSL is an organization that not only promotes the game of softball for first time players and coaches but also serves as a training ground for new umpires.